

Will the photovoltaic panels be affected by ice buds



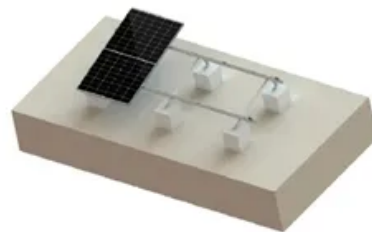
TILE ROOF SOLAR MOUNTING SYATEM



STANDING SEAM ROOF SYATEM



ADJUSTABLE TILT FLAT ROOF SYATEM



TRIANGLE FLAT ROOF SYATEM



Overview

Let's keep it simple—when solar panels are covered in ice, their performance drops dramatically. While many homeowners are aware of the need for occasional snow removal for solar panels, the risks associated with heavy snow loads and improper snow. As the snow starts to fall and ice begins to form, you might wonder how your solar panels will fare. Will they continue to generate power?

Could they get damaged?

These are valid concerns, and I'm here to address them. In this article, we'll explore various protective measures you can take to. Solar panels perform well in cold temperatures, often achieving higher efficiency rates during the winter season. However, ice and snow accumulation impact overall energy production if not managed properly. Thick ice acts as a shield, preventing photons from reaching the photovoltaic cells.

Will the photovoltaic panels be affected by ice buds



The Impact of Snow on PV Performance - Energy

Our investigation zeroes in on the following research areas, all of which are focused on increasing the performance and reliability of photovoltaic (PV) systems in snowy environments.

Winter Wonderland or Power Woes? How Snow and Ice Impact ...

Snow and ice, being opaque and reflective, effectively block sunlight from reaching these cells. Consequently, when your panels are covered, they are unable to generate power efficiently, ...



How to Protect Solar Panels from Snow and Ice? Explained

When it comes to protecting your solar panels from snow and ice, you've got options. Let's explore some effective strategies that can help keep your panels clear and functioning at their best ...

Do Solar Panels Work When Covered in Ice?

Solar energy can be severely affected when ice blocks sunlight, as panels require clear exposure to produce energy. Thick ice acts as a shield, preventing photons from reaching the photovoltaic cells.



How to prevent ice from falling on solar panels , NenPower

Ice accumulation can hinder energy production, primarily by obstructing sunlight from reaching the solar cells. This situation can lead to significant financial losses and operational ...

Understanding The Risks of Snow on Solar Panels

As snow melts on your solar panels, the water can refreeze at the edges, forming ice dams. These ice dams can trap additional snow and ice, creating a heavy buildup that increases the ...



Do Solar Panels Work Covered in Ice? Exploring the Impact of Wintery

Ice can have impacts on solar panels in



two distinct ways: physical deterioration and optical hindrance. Icing, especially when thawing and refreezing occurs repeatedly, may strain the ...

How Ice Affects Solar Panels: Tips For Homeowners

Ice Creating a Barrier to Light Transmission: Ice accumulation on the solar panels causes the light to scatter or refract, further diminishing the energy absorbed.

Outdoor Cabinet BESS
50 kWh/500 kWh Battery Storage System
Industrial and Commercial Energy Storage



-  **All In One**
Integrating battery packs
-  **Intelligent Integration**
Integrated photovoltaic storage cabinet
-  **High-capacity**
50 - 500kWh
-  **Rated AC Power**
50 - 100kW
-  **Degree of Protection**
IP54
-  **Altitude**
3000m(>3000m derating)
-  **Operating Temperature Range**
-20 - 60°C (Derating above 50 °C)

Can Solar Panels Still Work When They're Covered in Ice?

It's a common misconception that solar panels can "heat themselves" and melt away ice. While panels do absorb sunlight and can get warm during operation, they don't generate enough ...



What Happens to Solar Panels When Covered in Ice

The good news is that ice build up rarely causes permanent damage to solar panels, especially if it is a quality solar

install. Most high-quality panels, such as those installed by Low Energy Services, are ...



Contact Us

For catalog requests, pricing, or partnerships, please visit:
<https://www.59empagm.pl>

