

# What size is a 45 watt solar panel



## Overview

---

In any event, it's crucial to look at the space requirements for a 45-watt solar panel. Generally speaking, this solar panel is made up of 36 cells in total. A typical 300-watt solar panel is. Solar panel size is measured in watts (W) and indicates how much electricity the panel can produce under standard test conditions. Here's the key distinction every homeowner should understand: Most residential solar panels in 2025 come in three main configurations: The most common choice for. A 45-watt solar panel is a great place to start if you're looking for a solar panel and this is your first time researching green energy options. [A 45 Watt Solar Panel Can Power What?](#)

For the following applications, a 45 watt.

## What size is a 45 watt solar panel

---

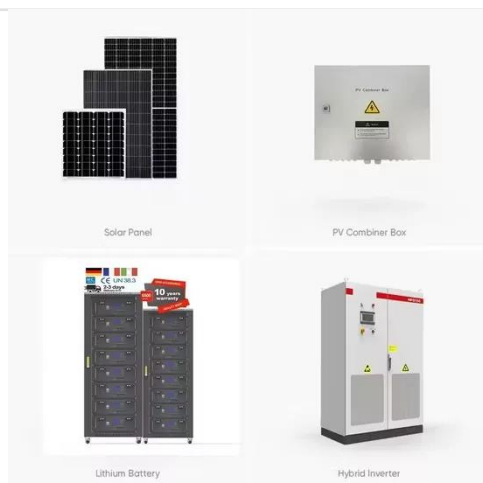


### What Will a 45-Watt Solar Panel Run? Examples and Applications

In this article, you'll find what a 45-watt solar panel can run, provide practical examples, and offer tips on maximizing its potential. The power output of a solar panel depends on several ...

## Solar panels size

For a very long time--basically the entire 2000s and 2010s--solar panels were built using silicon squares that were roughly 6 inches by 6 inches (156 mm).



### Solar Panel Size Guide (with 4 Charts)

Portable Solar Panel Size Chart  
 Solar Panel Size Chart For Residential and Commercial Use  
 Commercial and Residential Solar Panel Size Comparison  
 Solar Panel Weight Guide  
 What Solar Panel Size Do I Need?  
 Solar Panel Size and Wattage Chart  
 Conclusion  
 Here are the sizes for some of the more popular portable solar

panels. Portable panels are undergoing numerous changes and improvements, so the sizes are not as standardized as residential solar panels. See more on [portablesolarexpert Solar Power Beginner](#)

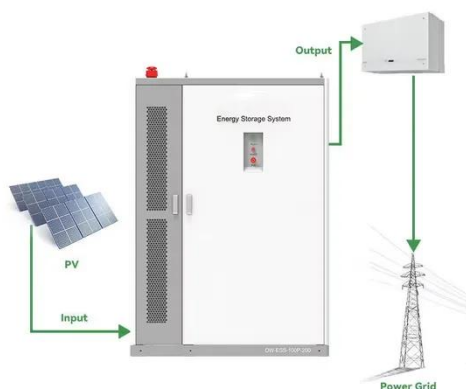
## A 45 Watt Solar Panel: The Power You Need In A ...

The 45 watt solar panel is like the tween of the solar power world. It's past the 15 watt toddler stage but it hasn't yet reached the adolescent level of the larger ...

---

## The Ultimate Guide to Solar Panel Size, Weight & Wattage (2025)

Standard residential solar panels are typically around 5.8 feet long by 3.5 feet wide and weigh between 40 to 50 pounds. However, the exact dimensions depend heavily on the panel's ...



---

## Solar Panel Sizes and Wattage Explained

Depending on manufacturer and type, these dimensions are usually available in millimetres which can be easily converted to centimetres or meters. For example, a standard PV ...

## Solar Panel Size & Dimensions Guide 2025 , Complete Specs

In this comprehensive guide, you'll learn everything you need to know about solar panel sizing, from standard dimensions to weight considerations, helping you determine the perfect solar ...



✓ 50KW/100KWH

✓ HIGHER POWER OUTPUT  
IN OFF-GRID MODE

✓ CONVENIENT OPERATION  
& MAINTENANCE

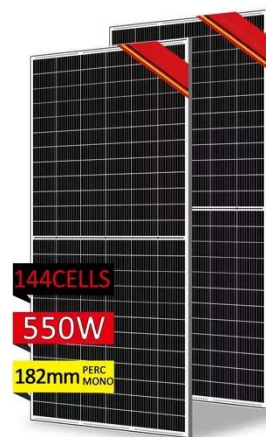
✓ PRE-WIRED

### Solar Panel Size Guide (with 4 Charts)

Many portable solar panels for RV are in the 100 to 300 watt range. The physical size of the panels often correlate to the watts, the bigger the panels the more watts it can generate. Here are the sizes for ...

### A 45 Watt Solar Panel: The Power You Need In A Small Solar Panel

The 45 watt solar panel is like the tween of the solar power world. It's past the 15 watt toddler stage but it hasn't yet reached the adolescent level of the larger panels.



### Standard Solar Panel Sizes And Wattages (100W-500W Dimensions)



To bridge that gap of very useful knowledge needed, we have compared and averaged the sizes of 100-watt to 500-watt solar panels available on the market. The goal here is to get to the average solar ...

---

## What Can a 45 Watt Solar Panel Power? - Features & Benefits

Fundamentally, a size of this size is perfect for indoor and outdoor uses. Being portable, it enables you to get energy anywhere you choose. This is all due to its very lightweight construction.

...



---

## What Will a 45 Watts Solar Panel Run? (With Examples)

In any event, it's crucial to look at the space requirements for a 45-watt solar panel. Generally speaking, this solar panel is made up of 36 cells in total. It also has a height of 30 inches ...

---

**Contact Us**

For catalog requests, pricing, or partnerships, please visit:  
<https://www.59empagm.pl>

