

# What is the working principle of base station energy storage



## Overview

---

BESS technology is based on the use of electrochemical batteries, which can store the energy produced by renewable energy plants. BESS are one of the main energy storage systems. Battery energy storage systems (BESS) are a key element in the energy transition, with a range of applications and significant benefits for the economy, society, and the environment.

## What is the working principle of base station energy storage

---



### Battery energy storage system

Since battery storage plants require no deliveries of fuel, are compact compared to generating stations and have no chimneys or large cooling systems, they can be rapidly installed and placed if ...

### Battery energy storage system

Overview  
Construction  
Safety  
Operating characteristics  
Market development and deployment

A battery energy storage system (BESS), battery storage power station, battery energy grid storage (BEGS) or battery grid storage is a type of energy storage technology that uses a group of batteries in the grid to store electrical energy. Battery storage is the fastest responding dispatchable source of power on electric grids, and it is used to stabilise those grids, as battery storage can transition from standby to full power in u...



### What Is Battery Storage and How Does It Work?



Battery storage systems operate through a reversible electrochemical process, converting electrical energy into chemical energy during charging and reversing the process to release electricity.

---

## Working principle of lithium battery energy storage base station

The working principle of lithium battery energy storage system is to use the migration of lithium ions between positive and negative electrodes to achieve the process of



---

## Working principle of energy storage battery base station

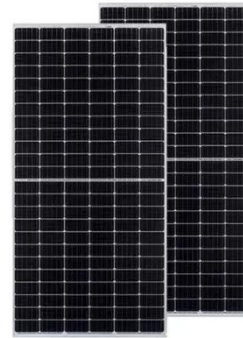
Battery energy storage technology is based on a simple but effective principle: during charging, electrical energy is converted into chemical energy and stored in batteries for later use.

---

## Base station battery pack principle

Overview Think of a base station's

energy storage system as a three-layer cake: 1. The Energy Sponge (Storage Devices) 2. The Shape-Shifter (Power Conversion System) This electrical translator ...



## Principle of Energy Storage Base Station , SCCD-SK SOLAR

A battery energy storage system (BESS), battery storage power station, battery energy grid storage (BEGS) or battery grid storage is a type of energy storage technology that uses a group of batteries ...

## What is a base station energy storage power station , NenPower

By integrating solar panels or wind turbines directly with energy storage units, these stations can optimize energy collection and use. Harnessing solar energy, for example, allows base ...



## AN INTRODUCTION TO BATTERY ENERGY STORAGE ...



With a bidirectional power conversion system (PCS), BESS can charge and discharge electricity to and from the energy grid. Before the AC power from the PCS can be transmitted into the grid, the output ...

---

## The Ultimate Guide to Battery Energy Storage Systems (BESS)-Blog

During the charge and discharge cycles of BESS, a portion of the energy is lost in the conversion from electrical to chemical energy and vice versa. These inherent energy conversion ...

18650<sup>3.7V</sup>  
Li-ion  
RECHARGEABLE BATTERY  
**2000mAh**



## BESS: Battery Energy Storage Systems

As in all storage systems, in BESS, the electricity produced by a power plant or any other generation method - even a single photovoltaic panel - is stored and then released at the desired times and ...

---

## Contact Us

For catalog requests, pricing, or partnerships, please visit:

<https://www.59empagm.pl>

