

The main functions of communication base station batteries include



The main functions of communication base station batteries include

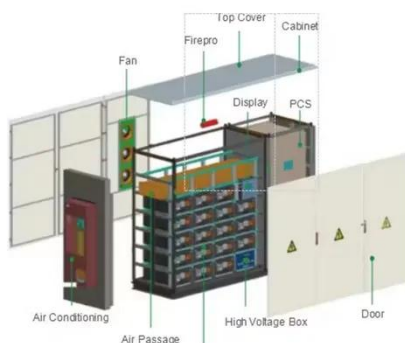


Understand Cellphone Basestation Technology » Electronics Notes

Understand the major elements within a cellphone or cellular network base station, what each element does and how the technology is evolving to provide more flexible operation & better performance. ...

What are the main applications of communication batteries in the

For example, the volume and weight of the same capacity lithium battery is one-half to one-third of the lead-acid battery, and it can be arbitrarily connected and placed, and there are no ...



What Is A Base Station?

Base stations play a central role in two-way radio systems, such as citizens band (CB) radio and ham radio. In these setups, the base station serves as a fixed point of communication, ...

Communication Base Station Battery in the Real World: 5 Uses

Batteries provide essential backup power for emergency response teams and temporary communication setups. Mobile command centers and portable base stations rely heavily on high ...

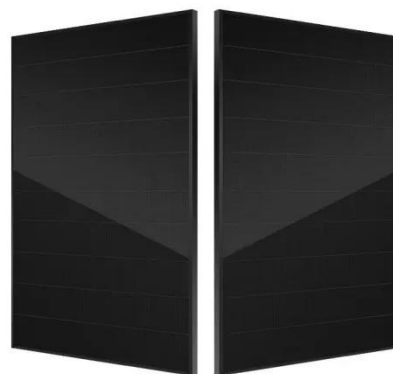


Communication Batteries: Why Telecom Base Stations Have Unique ...

The phrase "communication batteries" is often applied broadly, sometimes including handheld radios, emergency devices, or general-purpose backup batteries. In practice, when ...

INTRODUCTION TO COMMUNICATION BASE STATION BATTERIES

Detailed explanation of communication base station batteries Telecom base station backup batteries are essential for ensuring uninterrupted communication by providing reliable, long-lasting power during ...



What Are the Critical Aspects

of Telecom Base Station Backup ...



Telecom base station backup batteries are essential for ensuring uninterrupted communication by providing reliable, long-lasting power during outages. Critical aspects include battery chemistry, ...

Communication base station energy storage battery system

What are base station energy storage batteries used for? Fundamentally, these batteries function as crucial operational linchpins within the telecommunications sector, providing indispensable backup ...



INTEGRATED DESIGN
EASY TO TRANSPORT AND INSTALL,
FLEXIBLE DEPLOYMENT



What is a Base Station? -- From Communication Core to Thermal ...

Simply put, a base station (BS) is a wireless transceiver device in a mobile communication network that provides wireless coverage and communicates with mobile terminals ...

Base Stations

Base stations form a key part of modern wireless communication networks

because they offer some crucial advantages, such as wide coverage, continuous communications and an array of ...



Contact Us

For catalog requests, pricing, or partnerships, please visit:
<https://www.59empagm.pl>

