

# Solar photovoltaic panel installation is divided into upper and lower



## Overview

---

The upper panels are typically engineered for maximum sunlight exposure, whereas the lower counterparts might be situated in shaded areas or at a different angle, affecting their overall efficiency. The distinction between upper and lower solar panels lies primarily in their structure, functionality, and placement. Recognizing their orientation is essential for optimal energy absorption and efficiency. Learn more about community solar. Those interested in community solar can take advantage of a tool from. The upper-lower photovoltaic division isn't just some marketing gimmick. This split design: Imagine a commercial building in Phoenix using this system. This system is essentially your private power plant, harnessing the unlimited power of the sun and reducing our. The convection coefficient  $q_o$  between the panel and the fluid was divided into two parts:  $q_{c_o}$  being the convection between the panel and the outside air and  $q_{c_i}$  being the.

## Solar photovoltaic panel installation is divided into upper and lower

---



### The photovoltaic panel is divided into two parts upper and lower

In a system for generating electricity from the sun, the key element is the photovoltaic panel, since it is the one that physically converts solar energy into electricity; the rest is pure electronics, broken down ...

---

### Photovoltaic upper and lower panels

A photovoltaic cell is the most critical part of a solar panel that allows it to convert sunlight into electricity. The two main types of solar cells are monocrystalline and polycrystalline.



### Which side of the solar photovoltaic panel faces up?

In general, panels should be tilted at a specific angle that corresponds to the latitude of the installation site. For instance, regions closer to the equator benefit from lower angles, while those ...

## A Guide to Photovoltaic Systems Installation: From Setup to ...

Follow along with the essential steps of photovoltaic systems installation, from mounting solar modules and connecting to the grid, to commissioning and regular maintenance for optimal performance.

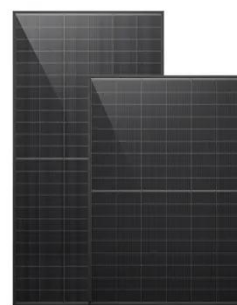


## Homeowner's Guide to Solar , Department of Energy

Costs associated with purchasing and installing a solar energy system are divided among all of the participants, who are able to buy into the shared system at a level that best fits their budget. Learn ...

## Is there a difference between upper and lower installation of

ot know, there is a vast difference between a photovoltaic cell and solar panels. Photovoltaic cells make up lar panels and photovoltaic systems, and outline the benefits of each technology



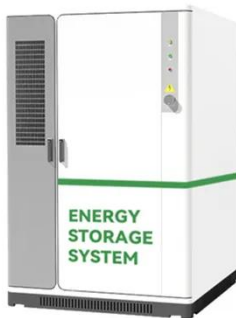
## A Guide to Photovoltaic PV System Design and Installation



In this comprehensive guide, we will delve into the fundamentals of PV systems, the design and installation process, and the benefits of harnessing the power of the sun. What is a Photovoltaic (PV) ...

## How to distinguish the upper and lower solar panels

The upper solar panels are generally more exposed to sunlight, harnessing energy effectively, while lower panels may be partially shaded or have restricted light access.



## Why Split Photovoltaic Panels? The Upper-Lower Division ...

The upper cells handle direct sunlight during peak hours, while the lower layer converts reflected light from nearby surfaces. It's sort of like having two power plants in one panel.

## Contact Us

For catalog requests, pricing, or partnerships, please visit:  
<https://www.59empagm.pl>

