

# Solar inverter peak shaving problem



## Overview

---

Shaving period should be set to cover load peaks. Battery will be discharged to shave load peak until battery SOC drop to Min SOC (10% by default). Once the consumption (grid side) reach this value, inverter will start shaving to keep the consumption below this value. I have a large 3 phase system (18 x 15kva multi's and 1mw batteries) with a large solar array. The. Peak shaving is when you use your own power to avoid the new tariff on your electricity bills during the biggest energy consumption times. Strategies for Implementing Peak Shaving A. Use local sources to replace grid power, such as generators, photovoltaic power, wind power, etc. Control your. Scroll to the bottom of any page to find a sun or moon icon to turn dark mode on or off! I recently purchased the Eco-Worthy 10kW Hybrid Split Phase Inverter with 20 kWh of batteries.

## Solar inverter peak shaving problem

---



### inverter system for peak-shaving

I recently purchased the Eco-Worthy 10kW Hybrid Split Phase Inverter with 20 kWh of batteries. Before contacting local electricians for quotes, I'm looking for advice on the best way to ...

### Solis Seminar?Episode 53?: How to use Peak Shaving to Save on

For areas where peak power consumption limits exist, the use of a photovoltaic (PV) system and energy storage power is necessary. The Solis hybrid inverter is a perfect match for this

...

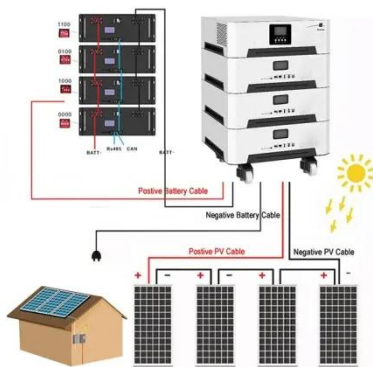


### Photovoltaic inverter peak shaving problem

In this article, an optimal rule-based peak shaving control strategy with dynamic demand and feed-in limits is proposed for grid-connected photovoltaic (PV) systems with battery energy storage systems. ...

## Peak load shaving

With the "Peak Load Shaving" function, you can optimize the behavior of the inverter with respect to the power exchange at the point of interconnection. This is mostly useful when a higher supply of energy ...



## Explanation and Best Practices of Peak Shaving Solar System

In this blog post, we will delve into the significance of peak shaving in solar systems and explore best practices to make the most of this innovative approach.

## Sunsynk Peak Shaving

Want to implement peak shaving to limit the grid usage to 40kw. We enabled the peak shaving at 40kw but the system just used battery power for the total load and did not use the grid at all.



## Peak Shaving

By utilizing Peak shaving, peak load can be reduced and hence the power fee. System is controlled to charge up during off-peak hours and discharged during



peak hours.

## Grid Peak Shaving Logic

3: Time of Use Settings Grid Peak Shaving (GPS) tells the inverter that it can discharge the batteries to make sure the utility usage does not surpass the pro.



- 50KW/100KWH
- HIGHER POWER OUTPUT IN OFF-GRID MODE
- CONVENIENT OPERATION & MAINTENANCE
- PRE-WIRED



## Peak shaving question

What I want to do is in the winter it runs in peaking shaving when solar production is low. I want it to use solar first, then grid then batteries but not recharge batteries unless solar is in excess.

## What Is Peak Shaving in Solar?

Discover how peak shaving in solar can slash your energy costs. Learn about battery storage systems and effective

strategies to optimize your solar power.



---

## Contact Us

---

For catalog requests, pricing, or partnerships, please visit:  
<https://www.59empagm.pl>

