

# Solar container communication station 48v DC power module

## Home Energy Storage (Stackble system)



High Efficiency



Easy installation



Safe and Reliable



Perfect Compatibility

### Product Introduction

- Scalable from 10 kWh to 50 kWh
- Self-Consumption Optimization
- Integrated with inverter to avoid the compatibility problem

- LFP battery, safest and long cycle life
- Stackable design, effortlessly installation
- Capable of High-Powered
- Emergency- Backup and Off-Grid Function



## Solar container communication station 48v DC power module

---

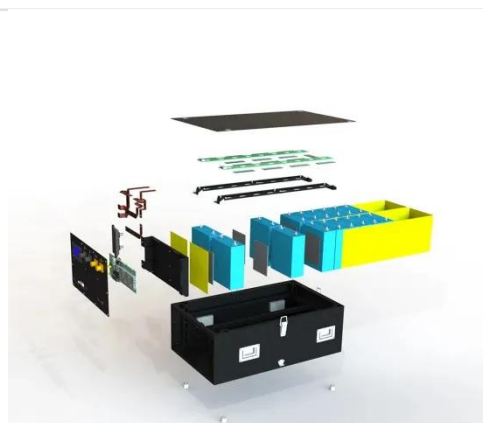


### 48V DC Power System , Telecom, Industrial & Solar Use

Reliable 48V DC power system for telecom, industrial, and solar energy storage. Ideal for backup power and continuous DC load applications.

## Solar container communication station Huawei 4850 power supply

The Huawei R4850N6 is a high-efficiency 48V 3000W telecom power supply module designed for reliable DC power systems. It is widely used in Huawei base stations, cabinets, and access

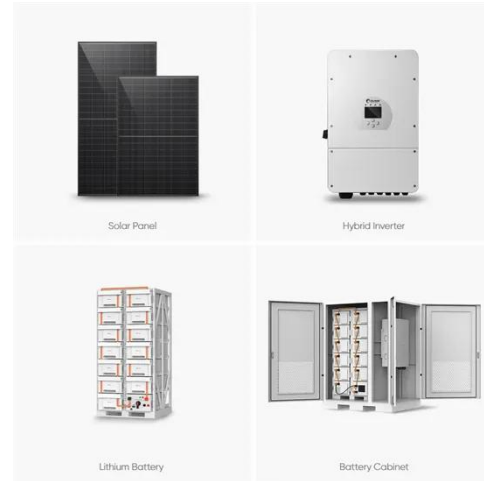


### Hybrid Solar MPPT for 48V Outdoor Base Stations

Hybrid solar MPPT solutions fit perfectly with 48V outdoor base stations. The system can deliver stable DC power to your equipment, which reduces energy loss and supports reliable operation.

## Communication container station

It is used in scenarios such as communication base stations, smart cities, transportation, power systems and other edge sites to provide stable power supply and optical distribution networks.



## How to start the 48v solar container communication station battery

Connect the DC and communication cable of the first or last battery module to the inverter. For ease of installation, SolarEdge recommends connecting the inverter to the top battery module.

## EK-SG-R01 Communication container station

EK-SG-R01 is a large outdoor base station with large capacity and modular design. This series of products can integrate photovoltaic and wind clean energy, energy storage batteries, and configure a ...



## Integrated Solar-Wind Power Container for Communications



This large-capacity, modular outdoor base station seamlessly integrates photovoltaic, wind power, and energy storage to provide a stable DC48V power supply and optical distribution.

---

## **48VDC Solar DC Power System for Telecom Base Station/Solar Telecom**

Application: Power plant or substation power for controlling, protection and automatic device, emergency lighting, communications, steam turbine DC oil pump and so on independent DC systems. It can ...



## **48VDC Solar DC Power System for Telecom Base Station**

It can provide reliable power supply in the case of a power failure completely in plant or substation. The traditional DC systems connect battery pack and run with float charging mode. The new DC system ...

---

**Contact Us**

For catalog requests, pricing, or partnerships, please visit:  
<https://www.59empagm.pl>

