

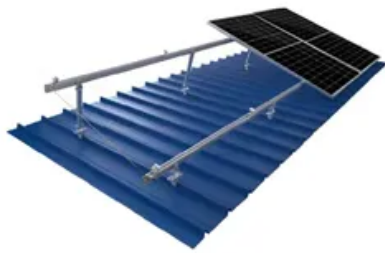
# Photovoltaic panel export code query official website



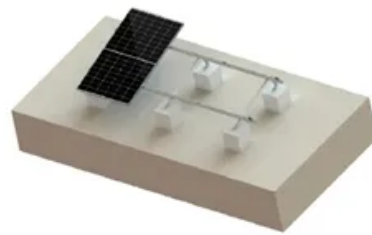
TILE ROOF SOLAR MOUNTING SYATEM



STANDING SEAM ROOF SYATEM



ADJUSTABLE TILT FLAT ROOF SYATEM



TRIANGLE FLAT ROOF SYATEM



## Overview

---

The USPVDB Viewer, created by the USGS Energy Resources Program, allows users to visualize, inspect, interact, and download the most current USPVDB through a dynamic web application. Crystalline Silicon Photovoltaic (CSPV) Cells and Modules as specified in Presidential Proclamation 10339 of Febru. Febru, through Febru. Aug: “A Proclamation to Further Facilitate. On Febru, the President signed a Proclamation “To Continue Facilitating Positive Adjustment to Competition from Imports of Certain Crystalline Silicon Photovoltaic Cells (Whether or not Partially or Fully Assembled Into Other Products)” under Section 201 of the Trade Act of 1974.

## Photovoltaic panel export code query official website

---



### QB 23-507 Solar Cells and Modules 2023

QB 23-507 Solar Cells and Modules 2023  
Commodity Reporting Instructions  
Special Instructions  
Notification  
Crystalline Silicon Photovoltaic (CSPV) Cells and Modules as specified in the Presidential Proclamation signed Febru. See more on [cbp.gov](http://cbp.gov) U.S. Customs and Border Protection

### QB 24-507 2024 Solar Cells and Modules Amended Aug

For in-quota merchandise, use entry type code 02, 06, 07, 12, 23, 32, 38, or 52. For over quota merchandise, use non-quota entry type, e.g., entry type 01. The merchandise covered by the quota ...

---

### QB 21-507 2021 Solar Cell/Modules

On Octo, the President issued Presidential Proclamation 10101 under section 201 of the Trade Act of 1974 removing bifacial solar panels (HTS 8541.40.60.15) from duty exempt ...





## QB 24-507 2024 Solar Cells and Modules Amended August 13, ...

For in-quota merchandise, use entry type code 02, 06, 07, 12, 23, 32, 38, or 52. For over quota merchandise, use non-quota entry type, e.g., entry type 01. The merchandise covered by the ...

## QB 22-507 Solar Cells and Modules 2022

For in-quota merchandise, use entry type code 02, 06, 07, 12, 23, 32, 38, or 52. For over quota merchandise, use non-quota entry type, e.g., entry type 01. The merchandise covered by the quota ...



- 100KWH/215KWH
- LIQUID/AIR COOLING
- IP54/IP55
- BATTERY 6000 CYCLES

## Codes and Standards

The safe and reliable installation of photovoltaic (PV) solar energy systems and their integration with the nation's electric grid requires timely development of the foundational codes and standards governing ...

## U.S. Photovoltaic Database

It includes corresponding PV facility information, including panel type, site type, and initial year of operation.



## **Navigating Photovoltaic Export Codes: A 2025 Trade Compliance Guide**

Exporting solar panels in 2025 requires navigating a regulatory obstacle course: Brazil's recent 12% import tariff hike serves as warning - developing nations are increasingly using trade barriers as

...

## **Photovoltaic Components Export Guide: HS Codes, Declaration ...**

Detailed explanation of the core rules for the export of photovoltaic modules, including HS classification (assembled modules under 8541430000), declaration elements, international FTA

...



## **Section 201 - Imported Solar**

## Cells and Modules



In his announcement, the President included an exemption for bifacial solar panels. This decision comes after the ITC recommended in November 2021 to extend the safeguard tariffs for an additional four ...

---

## Contact Us

For catalog requests, pricing, or partnerships, please visit:  
<https://www.59empagm.pl>

