

Photovoltaic channel board 400mm



✓ 50KW/100KWH

✓ HIGHER POWER OUTPUT
IN OFF-GRID MODE

✓ CONVENIENT OPERATION
& MAINTENANCE

✓ PRE-WIRED



Photovoltaic channel board 400mm

ESS



Renusol MetaSole+ Portrait rail 400mm long

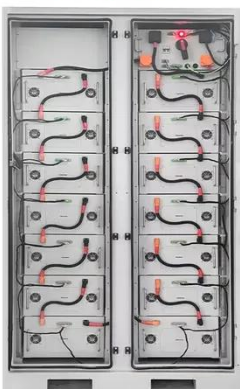
Material saving solar installation on trapezoidal sheet. Without continuous rails. Suitable for maximum 370mm distance between centres of raised trapezoidal ridges. PV modules with a frame height of 30 ...

MetaSole+ PORTRAIT rail 400mm long

MetaSole+ portrait rail set for the installation of PV systems on trapezoidal metal sheet. The mounting system is designed for PV modules with a frame height between 30-50mm in portrait position.



To Strive forward No Energy Waste



- ✓ All in one
- ✓ 100~215kWh High-capacity
- ✓ Intelligent Integration

400mm Width Solar Panel Roof Top Walkway FRP ...

Product Description 400mm width solar panel roof top walkway ...

Solar PV Panel Mounting Rail 400mm - Flat/Corrugated Metal Roof

Optimize your solar panel installation with our 400mm aluminium mounting rail, designed for flat or corrugated metal roofs. Lightweight and durable, this rail ensures a fast and cost-effective installation.



High-Efficiency 400mm solar panel

Go for efficient and robust 400mm solar panel at Alibaba for both residential and commercial uses. Buy amazing 400mm solar panel having mono, poly and photovoltaic cells.

400mm Width Solar Panel Roof Top Walkway FRP Grating

Product Description 400mm width solar panel roof top walkway FRP grating FRP Grating provides durability with extremely high strength and stiffness. Due to its high load capacity it can be used with ...



Renusol MS+ Portrait 400 mm (Set)



Readymade kits are suitable for the installation of PV systems on trapezoidal sheet steel and / or aluminium in various thicknesses. This high quality Renusol MS+ Portrait 400 mm set consists of ...

Renusol MetaSole+ PORTRAIT

Readymade kits are suitable for the installation of PV systems on trapezoidal sheet steel and / or aluminum in various thicknesses. Metasole Portrait kit: consist of Metasole plates and REN-400281 ...



Fischer aluminum profile for photovoltaic 400 mm ...

SolarFlat is an aluminum alloy profile designed to enable PV installations on flat or pitched roofs with trapezoidal sheet metal and orthogonal fastening.

VoltaconSolar Solar PV Panel Mounting Rail 400mm

400mm Aluminium Profile for Solar Panel Installation - Flat/Corrugated Metal Roof, Our 400mm aluminium profile offers a

lightweight and economical solution for mounting solar panels on ...



Renusol MetaSole+ PORTRAIT Rail 400mm Long

The Renusol MetaSole+ Portrait Rail (400mm) is a compact, material-saving PV mounting solution designed specifically for portrait (vertical) solar panel installations on trapezoidal metal roofs.

Contact Us

For catalog requests, pricing, or partnerships, please visit:
<https://www.59empagm.pl>

