

Location map of Shuangxi Wind Power Station



Location map of Shuangxi Wind Power Station



Guangdong (China)

Complete/correct this sheet:

Global Wind Atlas

The Global Wind Atlas is a free, web-based application developed to help policymakers, planners, and investors identify high-wind areas for wind power generation virtually anywhere in the world, and then perform ...

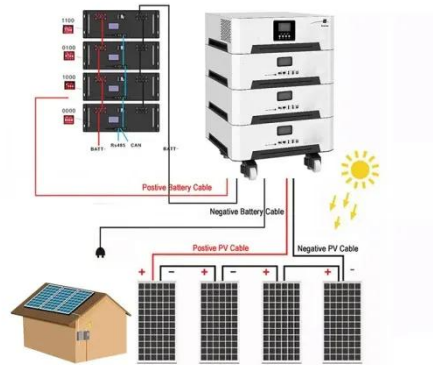


Shuangxi Map

Shuangxi is a hamlet in Dongyuan Village, Dongshan District, Taiwan Province. Shuangxi is situated nearby to the locality Luliaobu, as well as near the hamlet Houkengzi.

Shanghai Fengxian Offshore wind farm

Shanghai Fengxian Offshore wind farm is an operating wind farm in Fengxian District, Shanghai, China. The map below shows the locations of the wind farm phases: Loading map



Wind Power Plants in China (Map)

Data and information about Wind power plants and their location plotted on an interactive map of China.

Guangdong Lianzhou Shuangxi wind farm

Guangdong Lianzhou Shuangxi wind farm is an operating wind farm in Xingzi, Lianzhou City, Qingyuan, Guangdong, China.



Lianzhou Shuangxi (China)

Generalities Wind farm name: Lianzhou Shuangxi Country: China County / Zone: Guangdong



The Wind Power

It contains data about wind farms, turbines, manufacturers, developers, operators, owners and also pictures and cartographical data.



Contact Us

For catalog requests, pricing, or partnerships, please visit:
<https://www.59empagm.pl>

