

# How to connect the negative terminal of photovoltaic panel



## Overview

---

Connect the Leads: Attach the red lead (positive) to one terminal and the black lead (negative) to the other terminal. This connection creates a daisy chain effect. Installing a solar panel requires more than just positioning it in sunlight; understanding the positive and negative terminals is important especially for an efficient energy system. In this. In series wiring, the voltage of each solar panel is combined. Correct wiring methods prevent shorts, 3. In a parallel configuration.

## How to connect the negative terminal of photovoltaic panel

---



### How To Wire Solar Panels In Series: Complete Guide 2025

Wiring solar panels in series means connecting the positive terminal of one panel to the negative terminal of the next panel, creating a chain that increases total voltage while maintaining the ...

## How to connect the positive and negative of solar panels

To effectively connect the positive and negative terminals of solar panels, it is essential to follow a systematic approach that ensures optimal performance and safety.

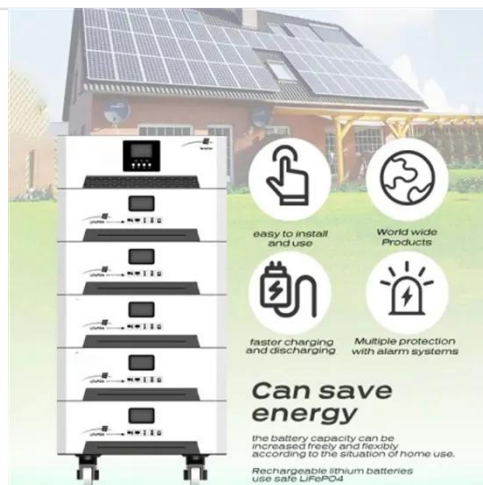


### Mastering Solar Panel Wiring: A Comprehensive Guide to PV Systems

In series wiring, the voltage of each solar panel is combined. The positive terminal of one solar panel is connected to the negative terminal of the next solar panel. Parallel wiring increases the ...

## Solar Panel Wiring Basics: Complete Guide & Tips to Wire a PV System

Wiring solar panels in parallel is achieved by connecting the negative terminal for two or more modules, while doing the same thing with the positive terminals.

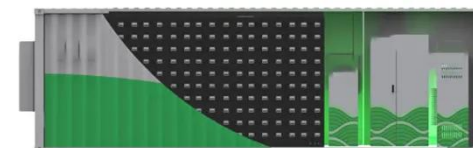


### Identifying Positive and Negative Terminals on a Solar Panel

In this article, we'll explore how to identify the positive and negative terminals of a solar panel, check solar panel polarity, and effectively connect a solar panel to a battery.

### Solar Panel Wiring Guide: How to Connect Solar Panels

In a series connection, the positive terminal of one solar panel connects to the negative terminal of the next. This increases the total system voltage while the current remains the same.



### How to Wire Solar Panels: A Step-by-Step Guide

Connecting a solar panel to a battery is



fairly simple. Start by connecting the positive wire from the solar panel to the positive terminal of the battery, then connect the negative wires from both ...

## Solar Panel Wiring Basics: How to Wire Solar Panels

Connecting the positive terminals of all panels together and repeating the same for the negative terminals will help you establish a parallel connection. In contrast, a series connection refers to ...



## Solar Panel Wiring Basics: Complete Guide & Tips to Wire a PV System

In a series connection, the positive terminal of one solar panel connects to the negative terminal of the next. This increases the total system ...

## How to place positive and negative wires on photovoltaic panels

The article explains how to determine

the positive and negative terminals of a solar panel, crucial for proper installation to avoid energy wastage. Methods include examining the diode and using a

...



## **Solar Panel Positive and Negative (Diode + Voltmeter)**

In this article, you will learn how to determine the positive and negative terminals of a solar panel. We will also show you how to check solar panel polarity, and how to connect a solar panel to a battery.

## **Contact Us**

For catalog requests, pricing, or partnerships, please visit:  
<https://www.59empagm.pl>

