

# How many square meters are usually used for photovoltaic panels



Voltage range:691.2-947.2V

>6000 cycles(100%DOD)

Rated battery capacity:  
216KWH (customizable)

EMS communication:  
4G/CAN/RS485



## How many square meters are usually used for photovoltaic panels

---



### How Many Square Meters Is One Solar Panel?

Rooftops: A typical 5 kW residential installation may require approximately 20 panels, translating to around 32 square meters (343 square feet) of roof space. Ground-Mounted Systems: ...

## how to calculate square meters of photovoltaic cells

Introduction Photovoltaic cells, also known as solar cells, are an essential component of solar panels which convert sunlight into electricity. When it comes to installing solar panels, it is important to ...



- IP65/IP55 OUTDOOR CABINET
- OUTDOOR MODULE CABINET
- OUTDOOR ENERGY STORAGE CABINET
- 19 INCH

### How many square meters are photovoltaic solar panels?

How many square meters are photovoltaic solar panels? The area occupied by photovoltaic solar panels depends on the specific application and the desired energy output. 1. ...

## How many square meters of solar panels does a ...

Discover how many square meters of solar panels are needed to cover the energy needs of a four-person family in Europe. Learn more.

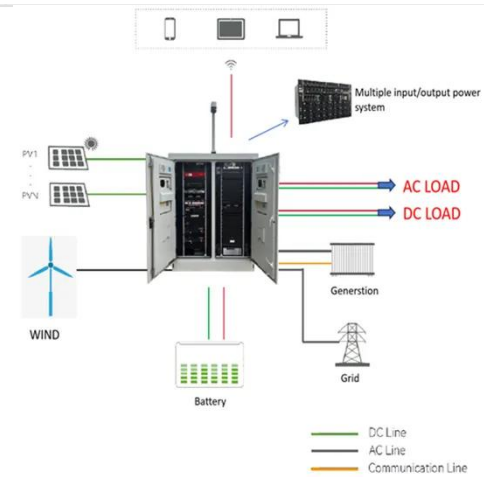


## Photovoltaic System: Exactly How Much Space is Needed

How Many Square Meters Are Needed For 6 KW System? 6 kW Photovoltaic System, which produces on average around 8,000 kWh of electricity per year, requires a free space of 36-42 ...

## How Many Square Meters of Photovoltaic Panels Do You Really ...

Let's cut through the jargon and answer the million-dollar question: how many square meters of photovoltaic panels are typically combined for an efficient solar setup? Spoiler alert: it's not one-size ...



## Solar Panel Output Per Square Meter

Discover how much electricity solar

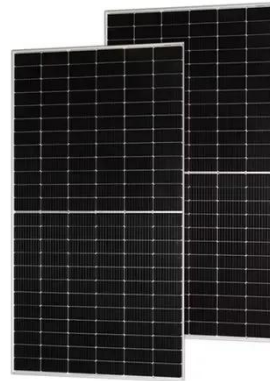
panels generate per square meter, explore efficiency factors, technology comparisons, and future innovations in photovoltaic energy.



---

## How many square meters is a photovoltaic solar panel?

The area of a photovoltaic solar panel can vary widely based on the model and its design. However, to provide a precise estimate: 1. The average size of a residential solar panel is ...



## Solar Photovoltaic Panel Sizing Guide

According to the current power of photovoltaic modules, it takes about 8 square meters to install 1KW; if you want to install a 15KW photovoltaic power station, you need a roof area of about 100 square ...

---

## How many photovoltaic panels are suitable for 100 square ...

How many photovoltaic panels are suitable for 100 square meters How

many solar panels do you need to power a house? The goal for any solar project should be 100% electricity offset and ...



---

## Contact Us

---

For catalog requests, pricing, or partnerships, please visit:  
<https://www.59empagm.pl>

