

How heavy is a wind turbine section



Overview

Wind tower sections typically range from 80 to over 120 feet in length and weigh between 50 and 120 tons. These specifications exceed the capacity of standard trailers, requiring multi-axle heavy haul trailers. 5 MW. How Much Does A Wind Turbine Weigh In Tons?

Industrial wind turbines are larger than those found in schoolyards or behind someone's house, with the GE 1.5-megawatt model being the most common. It consists of 116-ft blades atop a 212-ft tower, a total height of 328 feet, and a vertical airspace of. Modern wind turbines are absolute monsters, weighing between 200-400 tons each - that's like a small fleet of commercial airplanes stacked on top of each other. x wind turbine with a steel 110m tower.

How heavy is a wind turbine section

Applications

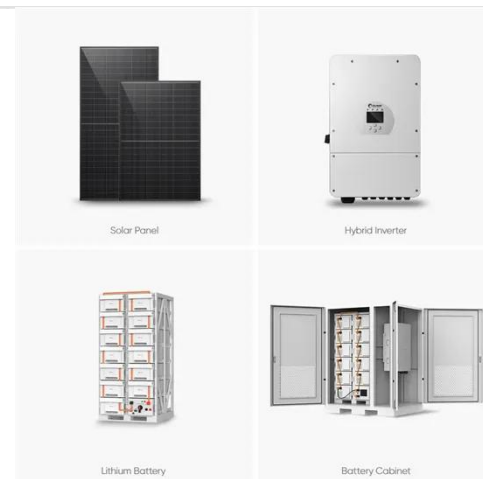


How Much Does a Wind Turbine Weigh?

A typical utility-scale wind turbine tips the scales at 200-400 tons total. That's right - each one weighs about as much as a small fleet of commercial airplanes.

What Equipment Do You Need for Wind Tower Section Hauling?

Wind tower sections typically range from 80 to over 120 feet in length and weigh between 50 and 120 tons. These specifications exceed the capacity of standard trailers, requiring multi-axle ...



How Heavy Is a Wind Turbine? Breaking Down the Weight

The overall weight of a wind turbine structure is distributed across three main components: the tower, the nacelle, and the rotor assembly (hub and blades). The steel tower contributes the largest single ...

How Much Does A Wind Turbine Weigh In Tons?

Turbines must be fitted with lights to be visible, and some nacelles include a helicopter landing pad. The weight of a wind turbine is divided among the rotor, generator, gearbox, tower, and ...



How Much Does A Wind Turbine Weight , Luxwisp

On average, a wind turbine weighs anywhere from 40 to 50 tons. This weight is divided among the rotor, the generator, the gearbox, the tower, and the foundation.

Wind Turbine Component Delivery Vehicles

Wind turbine component vehicles are selected and designed to distribute component and vehicle weight to loads of approximately 12 to 15 tons per axle. Table 1 lists typical component weights for a 3.x ...



How Much Does a Wind Turbine Weight: Technical Specifications

FLEXIBLE SETTING OF MULTIPLE WORKING MODES



Discover how much a wind turbine weighs and unlock its technical specifications! Learn key insights that can transform your understanding of renewable energy.

National Wind Watch , Size of Industrial Wind Turbines

How much do wind turbines weigh? In the GE 1.5-megawatt model, the nacelle alone weighs more than 56 tons, the blade assembly weighs more than 36 tons, and the tower itself weighs about 71 tons -- ...



How Much Does a Wind Turbine Weigh? Full Breakdown

Weighing between 5,000 and 30,000 pounds each, these blades vary in length and design depending on the turbine size and intended wind conditions. This variation illustrates how the ...

Rotor and Nacelle Mass

For any given design style, nacelle mass is very much determined by turbine

torque rating, which scales as cube of diameter. This implies that, with consistent design at the same level of technology ...



Contact Us

For catalog requests, pricing, or partnerships, please visit:
<https://www.59empagm.pl>

