

Overview

Standard residential solar panels are typically around 5.5 feet wide and weigh between 40 to 50 pounds. However, the exact dimensions depend heavily on the panel's technology, wattage, and the manufacturer's design., featuring 120 high-efficiency monocrystalline photovoltaic cells and an aluminum alloy frame for durability and reliability. 3%, the. Roof Load Capacity is Rarely a Limiting Factor: Solar panels add only 3-4 pounds per square foot to roof load, well within the 20+ pound capacity of most residential roofs. The real constraints are typically usable roof space after accounting for required 3-foot setbacks and obstruction clearances. Much like size, solar panel weight varies by technology and brand. These panels are designed to handle the higher energy demands of large commercial or industrial properties.

How heavy is a 460-watt photovoltaic panel

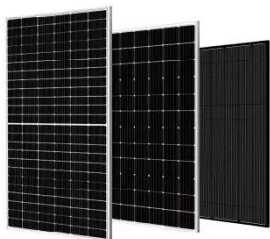


The Ultimate Guide to Solar Panel Size, Weight & Wattage (2025)

Find the exact solar panel size & weight in our 2025 guide. Our complete chart compares models by ft/cm and lbs/kg to help you plan your installation.

Solar Panel Size And Weight: A Comprehensive Guide

When considering residential solar panels, typical configurations consist of 60 cells measuring approximately 3.25 feet by 5.5 feet. These panels cover an area of 17.62 square feet and weigh



How Much Do Solar Panels Weigh? 1.30

When figuring out how much weight do solar panels add to a roof, that would be quite useful data to have. All individual solar panels weigh less than 100 lbs. However, solar systems with 8kW rated

...

Solar Panels Sizes and Weights (All Sizes)

Five hundred-watt solar panels are some of the largest solar panels produced. The average dimensions are 86.61 inches long by 43.31 inches wide. Once again, the average depth ...



Solar panel size and weight: everything you need to know

Much like size, solar panel weight varies by technology and brand. Most of today's best home solar panels weigh between 40 lbs and 50 lbs each, slight differences in weight can be ...

TONGWEI 460W

Compact Design: Dimensions of 1908 x 1134 x 35 mm and a weight of 24.20 kg make installation straightforward and efficient. Reliable Warranty: Backed by a 12-year product warranty, providing ...



Aptos 460W Monofacial Solar Panel

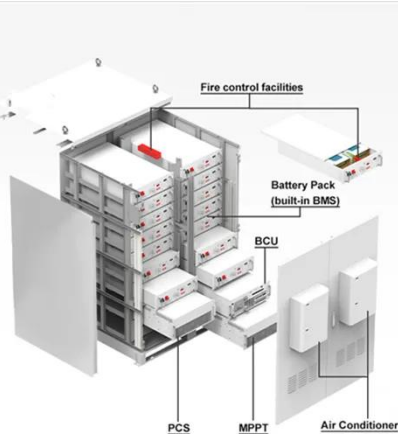
Maximum Durability: Certified to withstand 5400 Pa wind loads and Level 6 salt mist exposure. Patented DNA

Technology: Enhances power performance and module efficiency. Advanced Split Cell Design: ...



Complete guide to solar panel size and weigh

Below is a range of solar panel sizes. The 50W solar panel measures 670*540*25mm and weighs 20kg. The 100W solar panel has dimensions of 1030*460*30mm and weighs 20.3kg. The ...



Solar Panel Size & Dimensions Guide 2025 , Complete Specs

In this comprehensive guide, you'll learn everything you need to know about solar panel sizing, from standard dimensions to weight considerations, helping you determine the perfect solar ...

Solar Panel Size and Weight: A 2025 Guide (with Examples)

It is important to learn how much weight a solar panel has per watt so that it can

be installed safely and the system can be effective. The panel weight influences the load of the roof, the mounting conditions ...



Contact Us

For catalog requests, pricing, or partnerships, please visit:
<https://www.59empagm.pl>

