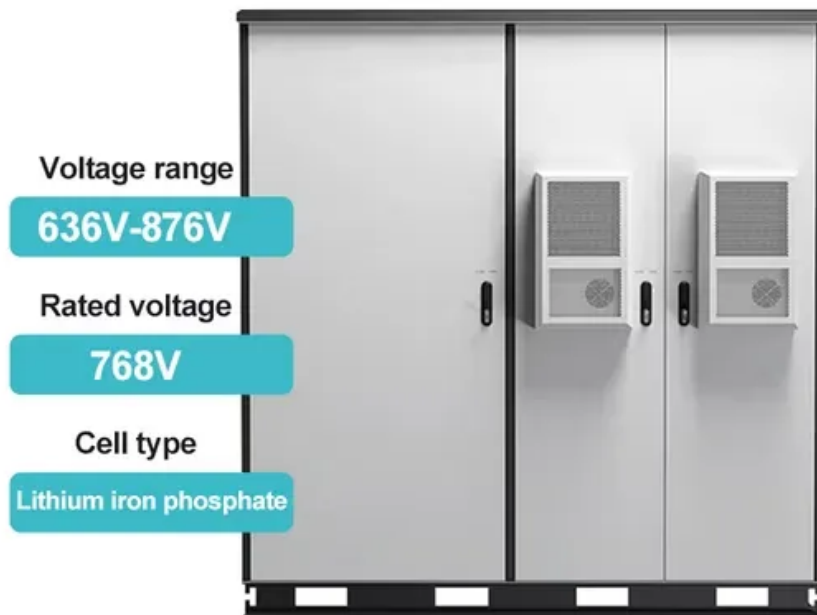


# How big an inverter should I use for a 100A 12V battery



## Overview

---

For most single battery setups, a 1000W pure sine wave inverter is the safest, most practical match. Step to calculate inverter size for 100ah battery: Calculate the total load you intend to use and add 20% for a safety margin. Actual runtime depends on load wattage and battery voltage. Always check your battery's voltage. Most 100Ah batteries are 12V, but some systems may use 24V. But there are two important limitations: A large inverter (e.

## How big an inverter should I use for a 100A 12V battery

---

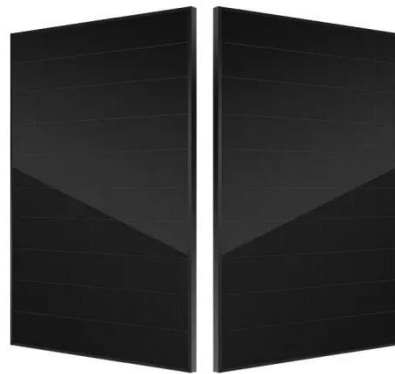
### 12V 100Ah Lithium Battery: Best Inverter Size



Tired of sudden shutdowns? Learn how inverter size, BMS limits, and efficiency affect a 12V 100Ah lithium battery and which pure sine inverter to choose.

### What size inverter can I run off a 100Ah lithium battery?

A 100Ah lithium battery can typically support an inverter up to 1,200W for 1 hour, assuming a 12V system. Actual runtime depends on load wattage and battery voltage.



### What Size Inverter Do I Need for a 100Ah Battery?

For example, a 12V 100Ah battery has 1200Wh capacity. Considering inverter efficiency (usually 80-95%) and power factors, a 1000W inverter is suitable to avoid overloading the battery ...



## How to Determine the Right

## Inverter Size for a 100Ah Battery

The inverter must match the power requirements of your devices while considering the battery's capacity and characteristics. This guide will help you understand how to choose the correct inverter size for ...



### What Size Inverter for 100Ah Battery? - MWXNE POWER

In this guide, we'll walk you through what size inverter works best with a 100Ah battery, how long your battery will last, and how to size your inverter-and-battery combo for real-world use.

### What Size Inverter Can I Run Off a 100Ah Battery? Maximize Your ...

Inverters operate at around 85-90% efficiency. Therefore, you can maximize your power capacity by using an inverter rated around 1000 to 1200 watts. This size allows you to run devices ...



### Calculate Battery Size For Any Size Inverter (Using Our Calculator)

To recharge your battery from time to time you would need the right size solar panel to do the job! Read the below article to find out the suitable solar panel size for your battery bank



---

## What Inverter Size is Best for a 100Ah Battery?

A 12V 100Ah battery can reasonably power an inverter up to 1000W-1200W for short periods. For continuous loads, 500W-800W is more efficient and battery-friendly.



---

## What size inverter do you need for a 100ah battery?

The power usage and type of appliances you're trying to run on the inverter. The specs of your battery bank. In this article, I explain how these factors come into play, and I discuss the ...

---

## Sizing the Right Inverter for 100ah Battery

In this guide, I will walk you through the process of sizing the right inverter for a 100ah battery along with an inverter size

chart.

Test certification  
CE    



---

## Contact Us

For catalog requests, pricing, or partnerships, please visit:  
<https://www.59empagm.pl>

