

# Grid-connected inverter in Juba



## Overview

---

9kWp solar energy rooftop system has been designed, supplied, installed and commissioned in Juba, the capital of South Sudan. The system comprises 415 panels of 550Wp with inverters of 100kW. The system is divided into two and each system operates independently but synchronized with the existing power supply. The Juba Solar Power Station is a proposed 20 MW (27,000 hp) solar power plant in South Sudan. The solar farm is under development by a consortium comprising Elsewedy Electric Company of Egypt, Asunim Solar from the United Arab Emirates (UAE) and I-kWh Company, an energy consultancy firm also based. This solar power plant is a grid-connected system integrated with 30 MW of diesel generators and has been completed in two phases, each with 13 MWp. For businesses, hospitals, and households, these systems reduce energy costs by up to 60% while providing cleaner power. With over 2,800 hours of annual sunshine. A grid-tied 229.

## Grid-connected inverter in Juba

---



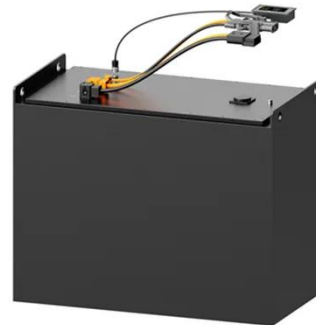
### Grid-Connected Inverters in Juba Powering Sustainable Energy ...

PowerVault Technologies - Juba, the capital of South Sudan, faces significant energy challenges, including frequent power outages and reliance on diesel generators. Grid-connected inverters have ...

---

### Aptech Africa successfully installs a solar power plant in Juba, South

This solar power plant is a grid-connected system integrated with 30 MW of diesel generators and has been completed in two phases, each with 13 MWp. All the panels have been ...

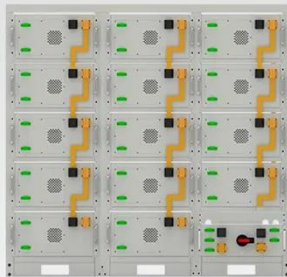


### Transforming Energy In Juba, South Sudan:

Recently, they successfully designed, supplied, installed, and commissioned a cutting-edge 229.9kWp solar rooftop grid-tied system in the heart of Juba.

## Installation & Commissioning of Solar Grid-Tied Systems in Juba

Aptech Africa designed, supplied, installed and commissioned a 229.9kWp solar rooftop grid tied system in Juba. The system comprised 415 panels of 550Wp with inverters of 100kW.



**Battery String-S224**

- 1C Charge/Discharge
- Easy configuration and maintenance
- Power supply can be single battery string or parallel battery strings

## Juba Energy Storage Photovoltaic Power Plant: A Game-Changer for

Summary: The Juba Energy Storage Photovoltaic Power Plant combines solar energy with advanced battery storage to address renewable intermittency. This article explores its technical advantages, ...

## Aptech Africa successfully installs a solar power plant in Juba, South

Aptech Africa went above and beyond to ensure that the client achieved their goal of having a more reliable and dependable power supply source for their loads by successfully installing ...



## Juba Solar Power Station



In March 2020, South Sudan's installed generation capacity was reported as approximately 130 MW. Most of the electricity in the country is concentrated in Juba the capital and in the regional centers of Malakal and Wau. At that time the demand for electricity in the county was estimated at over 300 MW and growing. Nearly all electricity sources in the country are fossil-fuel based, with attendant challenges of cost and environmental pollution. There are plans to build new generation stations and to import electr...

---

## Solar Photovoltaic and Battery Storage Systems for Grid-Connected in

Nowadays, as the technology behind solar photovoltaic systems has been significantly improved, along with a significant decrease in costs, grid-connected photovoltaic systems are ...



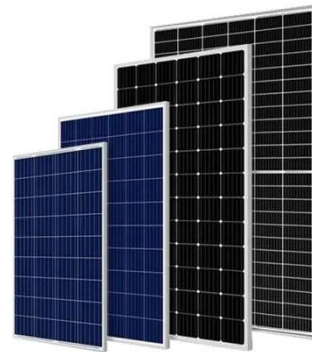
---

## Juba Solar Power Station

There are plans to build new generation stations and to import electricity from neighboring Ethiopia, Sudan and Uganda, but the civil war has hindered progress in that direction.

## APTECH AFRICA COMPLETES THE INSTALLATION ...

Aptech Africa went above and beyond to ensure that the client achieved their goal of having a more reliable and dependable power supply ...



## Grid-tied solar energy systems commissioned in South Sudan

A grid-tied 229.9kWp solar energy rooftop system has been designed, supplied, installed and commissioned in Juba, the capital of South Sudan. The system comprises 415 panels of 550Wp

...

## Contact Us

For catalog requests, pricing, or partnerships, please visit:  
<https://www.59empagm.pl>

