

Electricity consumption of wind farm power plants



Overview

electricity generation from wind energy increased from about 6 billion kilowatthours (kWh) in 2000 to about 434 billion kWh in 2022. In 2022, wind turbines were the source of about 10. utility-scale electricity generation. Other electricity plants generally use their own electricity, and the difference between the amount they generate and the amount delivered to the grid is readily determined. Wind plants, however, use electricity from the grid, which does not appear to be accounted for in their output figures. The authors would like to thank Patrick Gilman (U. Many of the major markets installed less than in the previous year – in almost half of the top 20 markets, new capacity was.

Electricity consumption of wind farm power plants



Global Statistics

Share of wind power in electricity generation and consumption. The world's installed wind power capacity now meets well over 10% of global electricity demand - and much more than nuclear ...

Energy consumption in wind facilities

Large wind turbines require a large amount of energy to operate. Other electricity plants generally use their own electricity, and the difference between the amount they generate and the amount delivered ...



Cost of Wind Energy Review: 2024 Edition

The 13th annual Cost of Wind Energy Review uses representative utility-scale and distributed wind energy projects to estimate the levelized cost of energy (LCOE) for land-based and offshore wind ...

Consumption of Electricity by Wind Turbines [AWEO]

Large wind turbines require a large amount of energy to operate. Other electricity plants generally use their own electricity, and the difference between the amount they generate and the amount delivered ...

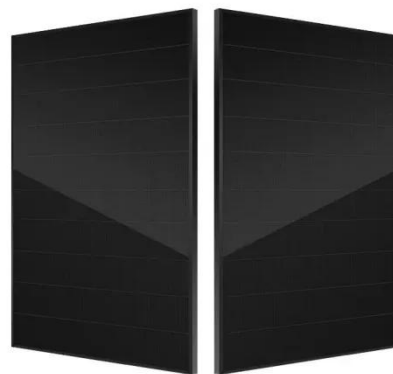


Electricity generation from wind

Total annual U.S. electricity generation from wind energy increased from about 6 billion kilowatthours (kWh) in 2000 to about 434 billion kWh in 2022. In 2022, wind turbines were the source ...

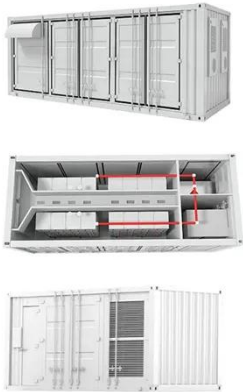
Primary energy consumption from wind power

Primary energy consumption is expressed in input-equivalents (using the substitution method). For nuclear, hydro, solar, and wind, we divide gross electricity generation by a time ...



Wind Energy Factsheet

Wind could provide 20% of U.S. electricity by 2030 and 35% by 2050. 11 Five of the eight Great Lakes states have offshore wind energy potentials that



exceed their annual electricity demand (MI, WI, NY, ...)

Wind Energy , Department of Energy

Wind power is the nation's largest source of renewable energy, with more than 150 gigawatts of wind energy installed across 42 U.S. States and Puerto Rico. These projects generate ...



U.S. Wind Energy Facts*

the other power plants. Wind projects add energy to the grid, and those electrons strengthen the local grid, flowing through the path of least resistance where. er the power is needed. This project will help ...

Contact Us

For catalog requests, pricing, or partnerships, please visit:
<https://www.59empagm.pl>

