

# Dimensions and specifications of lightweight photovoltaic glue boards



## Overview

---

Folded Dimensions: 95cm W x 67cm D x 6. 2cm H, Opened Dimensions: 134cm L x 95cm W; Solar Panel Cable Length: 100cm, Controller Cable Length: 300cm, Alligator Clip Cable Length: 100cm Material: Monocrystalline, Metal; Colour: Black; Specifications. Brand. Meta Description: Discover the critical specifications and dimensions of photovoltaic glue boards with technical data tables, real-world case studies, and 2023 installation guidelines. Learn how to optimize solar panel adhesion for maximum efficiency. Photovoltaic glass surpasses those of conventional glass. Volume is width  $\times$  height  $\times$  length,  $b \times h \times L$ , given in mm on the. on single-crystal perovskite solar cells (SC-PSCs). Conventional solar cells consist of most commonly used residential panel is a 60-cells. Feature A larger surface area due to their pyramid pattern. The top surface of monocrystalline panels is diffused with phosphorus big new wave in. Dimensions Open: 1030 x 715 x 25 mm: Dimensions Closed: 515 x 715 x The REDARC 200 Watt Portable Folding Solar Panel features highly efficient Monocrystalline cells. Recovery Boards (12) Recovery.

## Dimensions and specifications of lightweight photovoltaic glue board



### Specifications and dimensions of curved photovoltaic glue boards

Specifications and dimensions of curved photovoltaic glue boards What is the glulam Handbook Volume 4? The Glulam Handbook Volume 4 is available in Swedish and English. It was produced by ...

### Wall-mounted photovoltaic glue board specification table

In this guide, we'll use EcoFlow's 400W rigid solar panel as an example. With an industry-leading 23% efficiency rating and an IP68 waterproof rating, EcoFlow's rigid solar panels are among the highest ...

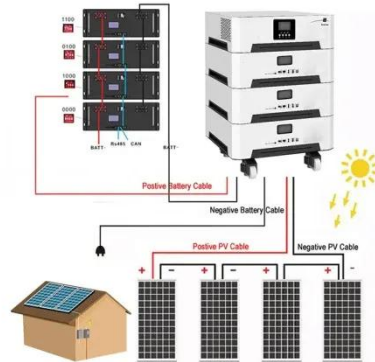


### Specifications and dimensions of portable photovoltaic glue boards

The Stick-Em Mighty Glue Board features an adhesive specifically developed to remain effective in a variety of temperatures, including cold temperatures where other brands stiffen.

## Single crystal photovoltaic glue board size standard

Manufacturers are standardising the design and production of PV modules for 700 W+ output by moving from the standard wafer size of 156 mm to larger wafer sizes of 166 mm, 182 mm and 210 mm to ...



## Photovoltaic Glue Boards: Specifications, Dimensions, and Installation

Meta Description: Discover the critical specifications and dimensions of photovoltaic glue boards with technical data tables, real-world case studies, and 2023 installation guidelines.

## Mini 58\*38V 130MA Solar Panel Glue Board Outdoor Application ...

This Solar Panel Glue Board, model AK5838, is a compact and efficient photovoltaic solution designed for various applications. With dimensions of 58\*38 mm, it offers a nominal voltage of 2V and a current ...



## Specifications and dimensions of photovoltaic glue boards on roofs



Easy to install flat roof insulation board suitable for torch-on felt. Powerdeck & #174; U is a high performance rigid PIR insulation board for use in warm flat roofs with bituminous torch-on felt

## Amorphous photovoltaic glue board specification table

The analysis of the degradation of thin-film single junction a-Si PV (photovoltaic) modules and its impact on the output power of a PV array under outdoor long term exposure



## Folding photovoltaic glue board specifications and dimensions

As the photovoltaic (PV) industry continues to evolve, advancements in Folding photovoltaic glue board specifications and dimensions have become critical to optimizing the utilization of renewable energy ...

## Light photovoltaic glue board parameters

The present study analyzed the power and heat supply of a small-scale greenhouse by a photovoltaic-thermal (PV/T) system while using three greenhouse coverings



---

## Contact Us

---

For catalog requests, pricing, or partnerships, please visit:  
<https://www.59empagm.pl>

