

Classification of wind turbine generator sets



Overview

In general, three types of generators are commonly used in wind turbines: Synchronous Generators, Asynchronous (Induction) Generators, and Direct Drive Generators. The type-3 wind turbine use doubly fed induction generators (DFIG) with power. The application of WTGs in modern wind power plants (WPPs) requires an understanding of a number of different aspects related to the design and capabilities of the machines involved. Today more and more wind farms are connected into the power grid. This conversion process is facilitated by the generator embedded within the wind turbine. The wind power plant is widely used in the entire world. Horizontal Axis Wind Turbine (HAWT) Vertical Axis Wind Turbine (VAWT) A horizontal axis machine has its blades rotating on an axis parallel to the ground.

Classification of wind turbine generator sets



Wind Turbine Generators for Wind Power Plants

The Type 3 turbine, known commonly as the Doubly Fed Induction Generator (DFIG) or Doubly Fed Asynchronous Generator (DFAG), takes the Type 2 design to the next level, by adding variable ...

Types of Wind Turbines

Wind turbines are classified into two general types: horizontal axis and vertical axis. Horizontal Axis Wind Turbine (HAWT) Vertical Axis Wind Turbine (VAWT) A horizontal axis machine has its blades ...



The Different Types of Generators in a Wind Turbine

Explore the different types of generators used in modern wind turbines, their advantages, and how they impact overall turbine performance.



Types of wind

The largest operating wind turbines have electric-generating capacity of about 15,000 kilowatts (15 megawatts). Larger turbines are in development. Wind turbines are often grouped together to create ...



Wind Power Plant



The generators are used in the wind power plant to convert the kinetic energy of wind into electrical energy. There is different generator used according to the power requirement.

Types of Wind Turbine Generators

In wind source-based power generation, there are different types of wind turbine (WT) models used for power generation which have different topologies. The type-1 and type-2 wind turbines use induction ...



Comparative study of different types of generators used in wind ...

Wind turbine is classified into two types.



They are fixed speed turbines and variable speed turbines. In fixed speed turbines the maximum efficiency is obtained at a particular speed only.

Wind Power Plant

What Is A Wind Power Plant? Classification of Wind Turbine Performance of Wind Turbines Site Selection of Wind Power Plant Schemes of Electric Generation Generators Used in Wind Power Plants Advantages & Disadvantages of Wind Power Plant The generators are used in the wind power plant to convert the kinetic energy of wind into electrical energy. There is different generator used according to the power requirement. The below list shows the generators used in the wind power plant. 1. Squirrel cage induction generator 2. Wound rotor doubly fed induction generator 3. Wound rotor synchr See more on electrical technology



Videos of Classification of Wind turbine Generator Sets

Watch video 2:50 Types Of Wind Turbines & Their Working Principles E-Concepts 2.9K views Watch

video5:06Wind Turbines Explained -
Wind Power Industry Overview
Primerli2.4K viewsWatch video on
8:17What is wind turbine, Types of wind
turbine , Parts and working of wind
turbine PK Classes104.6K viewsWatch
full videorindustry [PDF]

Types of Wind Turbines - rindustry

Wind turbines are classified into two
general types: horizontal axis and
vertical axis. Horizontal Axis Wind
Turbine (HAWT) Vertical Axis Wind
Turbine (VAWT) A horizontal axis
machine has its blades ...



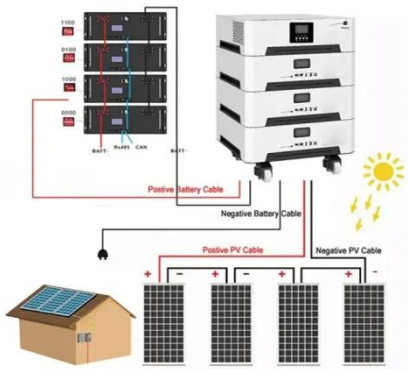
Wind Energy Systems Classification

The document discusses different types
of wind turbine systems for converting
wind energy. It describes horizontal axis
wind turbines as the most common, with
either upwind or downwind
configurations.

PowerPoint Presentation

Groups of wind turbines are located in
what is called either a "wind farm" or a
"wind park" Typical WECS components.
FIGURE 7.5 Principal components of
most wind energy conversion systems.
Masters, ...

- ✓ LIQUID/AIR COOLING
- ✓ INTELLIGENT INTEGRATION
- ✓ PROTECTION IP54/IP55
- ✓ BATTERY /6000 CYCLES



Wind Turbines Selection Guide: Types, Features, Applications

Wind turbines convert the kinetic energy from wind into mechanical energy. When used with an electrical generator, the rotation of the wind turbine's blades turns a shaft to produce electricity. There are two ...

Contact Us

For catalog requests, pricing, or partnerships, please visit:
<https://www.59empagm.pl>

