

# Can the solar container communication station inverter shut down the network



## Overview

---

Grid-tied solar is designed to shut off during power outages. It is a safety feature called anti-islanding. You will see why this matters, how inverters do it, and what codes. as an option and can control the output of the inverters. While maximizing power transfer remains. As others have said OP's inverter most likely shut down due to over voltage IMHO. The on-off switch can be deployed in a remote place, where the operator can turn on or off the switch at a safe distance to control the inverter. It protects utility workers, neighbors' equipment, and the grid itself. You will also learn how. The integrated containerized photovoltaic inverter station centralizes the key equipment required for grid-connected solar power systems — including AC/DC distribution, inverters, monitoring, and communication units — all housed within a specially designed, sealed container.

## Can the solar container communication station inverter shut down t



### Solar container communication station Inverter Regulations

What Are Shipping Container Solar Systems? Understanding the Basics A shipping container solar system is a modular, portable power station built inside a standard steel

### Does the solar container communication station inverter need a ...

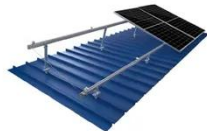
One such innovation gaining rapid adoption is the solar power container. Solar power containers combine solar photovoltaic (PV) systems, battery storage, inverters, and



TILE ROOF SOLAR MOUNTING SYSTEM



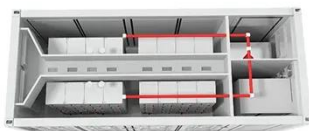
STANDING SEAM ROOF SYSTEM



ADJUSTABLE TILT FLAT ROOF SYSTEM



TRIANGLE FLAT ROOF SYSTEM



### GoodWe shutdown solution

Contrary to the principle of remote shutdown, however, the two pins inside the EPO port are bridged to shut down the inverter, and the inverter operates normally when the pins are not bridged.

## The Ultimate Guide to Anti-Islanding: Codes, Inverters, and Safety

Grid-tied solar is designed to shut off during power outages. This is not a flaw. It is a safety feature called anti-islanding. It protects utility workers, neighbors' equipment, and the grid ...



## Where are the inverters container communication connected to the ...

Where are the inverters container communication connected to the grid built for solar stations How do inverters provide grid services? In order to provide grid services, inverters need to have sources of ...

## OFF: instructed shutdown

Solar inverters are designed to turn-off in the case of the grid connection being down. That is a safety requirement so that during outages workers can fix powerlines with certainty that ...



## Public solar container communication station inverter grid ...



Can distributed solar PV be integrated into the future smart grid? In the report, the communication and control system architecture models to enable distributed solar PV to be integrated into the future ...

---

## Can Your Solar Inverter Be SHUT DOWN Remotely?

We'll break down what actually happened with Deye, how remote access works, and why this could affect every homeowner using smart solar equipment in the U.S. or Europe



---

## Bangladesh solar container communication station inverter grid

The simulation study, conducted for a telecom operator's off-grid base stations in Bangladesh, demonstrates that deploying four vertical mini solar towers with bi-facial panels

---

## Contact Us

For catalog requests, pricing, or partnerships, please visit:

<https://www.59empagm.pl>

