

Can the inverter reach 220 volts

Support Customized Product



Overview

Most power inverters are designed to convert 12-volt, 24-volt, or 48-volt DC to 120-volt AC. This process is called stacking. Connecting an inverter to a 220V power supply isn't as simple as plug-and-play. From solar farms to home backup systems, 220V inverters power diverse. Summary: This article explains how to convert 220V AC power for inverters, explores common applications in solar energy and backup systems, and provides actionable safety tips. Discover why proper voltage conversion matters for both residential and industrial users.

Can the inverter reach 220 volts

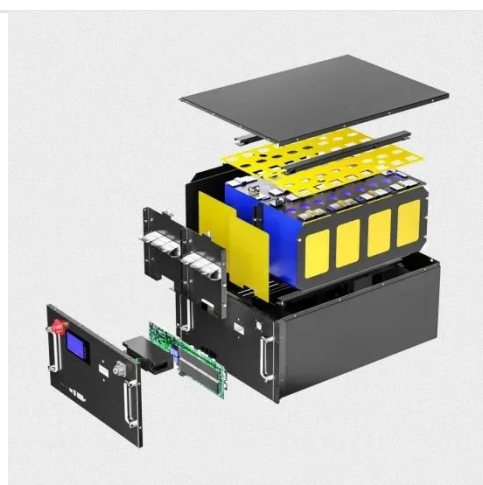


questions about inverters for a solar power system with both 220 and

Just imagine the inverter as the supply, it can be supplied by battery/solar/or grid (shore power), and has one 240V output, use it as you would any other 240V output.

How to Link Two Inverters Together to Get 220V AC

Most power inverters are designed to convert 12-volt, 24-volt, or 48-volt DC to 120-volt AC. These inverters are commonly used in recreation vehicles and solar power systems.



Best 24V to 220V Power Inverters for Home, RV, and Solar Systems

The Anern 4200W hybrid solar inverter combines pure sine wave inverter functionality with a 120A MPPT solar charge controller in one integrated unit. It supports 24V DC input and ...

Best Power Inverters 24V to 220V for Reliable AC Conversion

It supports both 12V and 24V DC inputs and outputs stable 220V AC sinusoidal power with over 90% conversion efficiency, reducing power loss. The inverter includes multiple safety ...

Sample Order
UL/KC/CB/UN38.3/UL



220 Volt Inverter: The Ultimate Guide to Choosing the Right One

What is a 220 volt inverter? A 220 volt inverter converts DC power from batteries into 220V AC power, allowing you to run appliances when traditional power sources are unavailable.

Best 220 Volt Power Inverters for Cars, Homes, and Solar Systems

Its lightweight and smart size design fit most cars, supporting an input voltage range of 10.5-16V DC and output voltage of 220V AC. This inverter balances efficiency with portability for ...



Buyer's Guide for 220 Volt Inverters , 220 Volt Appliances , 240 Volt



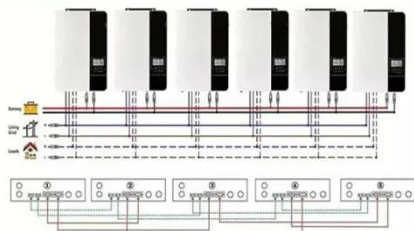
Answer 1: A 220 volt power inverter is a device that converts low-voltage DC (direct current) power to standard household AC (alternating current) power. It allows you to operate household appliances ...

Can You Connect an Inverter to 220V? A Complete Guide for Home ...

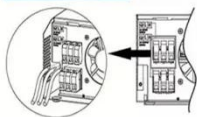
Summary: Wondering if your inverter is compatible with 220V power systems? This guide breaks down technical requirements, safety considerations, and real-world applications across residential, ...



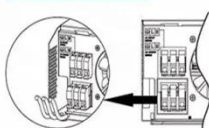
Parallel (Parallel operation up to 6 unit (only with battery connected))



AC input wires



AC output wires



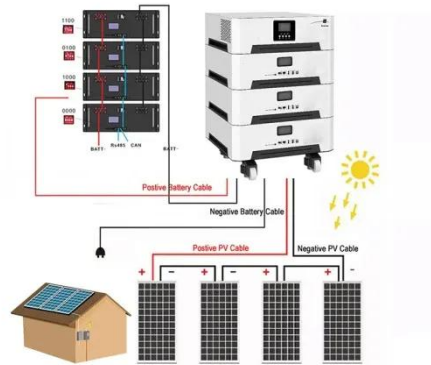
How to change solar panels into 220

Inverters not only convert DC to AC but also adjust the voltage level. For a system designed to connect with common household or commercial power structures, an inverter that can ...

How to Safely Connect a 220V Power Supply to an Inverter: A ...

...

Summary: This article explains how to convert 220V AC power for inverters, explores common applications in solar energy and backup systems, and provides actionable safety tips.



Contact Us

For catalog requests, pricing, or partnerships, please visit:
<https://www.59empagm.pl>

