

Can lithium battery packs be balanced when connected in parallel



Overview

Yes, a battery pack can self-balance if it uses parallel cells. These cells naturally share charge through direct connections. Balancing lithium batteries in parallel involves measuring each battery's voltage before connection, ensuring they're within an acceptable range of each other, and then connecting all positive and negative terminals together. What Does It Mean For Lithium Batteries To Be Balanced?

Battery balancing. When multiple batteries are connected in parallel, their individual ampere-hour (Ah) capacities add up, resulting in a higher total capacity. This configuration is commonly used in various applications, from portable electronic devices to electric vehicles and renewable energy systems. 25v or more out of whack - or you don't want to wait 24 hours - here's how the Manufacturing Design engineers recommend. Always ensure that your batteries have the same voltage and chemistry before you start.

Can lithium battery packs be balanced when connected in parallel



How to Balance Lithium Batteries in Parallel

Balancing lithium batteries in parallel involves measuring each battery's voltage before connection, ensuring they're within an acceptable range of each other, and then connecting all positive and ...

How to Balance Lithium Batteries with Parallel BMS?

When lithium batteries are connected in parallel, the voltage remains the same, and the battery capacity increases. This configuration reduces the overall internal resistance of the battery pack, thus ...



How to Parallel Balancing. (YEP 99% of us is doing it wrong)(PART#1)

Remember - Balancing requires a voltage differential to move current between or from/to the cells. That's why just putting them together in parallel and leaving them does NOT do much. So to QUICKLY ...

Can a Battery Pack Self-Balance? Exploring Cell Balancing in Lithium

Yes, a battery pack can self-balance if it uses parallel cells. These cells naturally share charge through direct connections. However, battery packs with cells in series need a balancing process. This ...



How Does The BMS Equalize Batteries When Connected Parallel

Use a BMS that has an active balancing function, and ensure that the batteries are connected in parallel. Make sure that the batteries are at the same temperature and voltages before connecting them to ...

A Complete Guide to Parallel Connection of Lithium Ion Batteries

Always use lithium batteries with the same voltage and chemistry. This helps stop overheating and damage. Check and balance the voltages of all batteries before connecting them in parallel. This keeps ...



How to Safely Charge Lithium Batteries in Parallel

Learn safe and efficient parallel battery charging for lithium packs. Avoid overheating, imbalance, and risks with proper tools and best practices.



Management of imbalances in parallel-connected lithium-ion battery packs

This study reveals why balancing circuits are seldom implemented on cells in a parallel connection, and provides guidance on reducing cell imbalances by managing battery operation in terms of

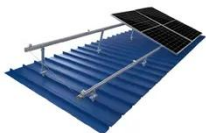
...



TILE ROOF SOLAR MOUNTING SYATEM



STANDING SEAM ROOF SYATEM



ADJUSTABLE TILT FLAT ROOF SYATEM



TRIANGLE FLAT ROOF SYATEM

Will Batteries Balance in Parallel? (What Does a Lithium Battery

Batteries connected in parallel will balance if they are of the same type and capacity and have a similar level of charge. If the batteries are not balanced, it can lead to uneven charging and discharge, which ...

Do You Need To Balance

Batteries In Parallel?

Yes, balancing parallel batteries helps ensure they work efficiently, last longer, and perform optimally. Parallel battery setups are common in various applications, including solar power systems, RVs, ...



Contact Us

For catalog requests, pricing, or partnerships, please visit:
<https://www.59empagm.pl>

