

Can a 48V 220V inverter power a motor



Overview

Q: Can I run a 3-phase motor with a 48V inverter?

A: Yes, using a three-phase inverter with vector control technology. Q: What battery type works best?

A: Lithium-ion (LiFePO4) batteries offer better cycle life than lead-acid alternatives. This combination is revolutionizing industries from renewable energy to industrial automation. Let's break. Unlike simple appliances, inverters don't have a fixed wattage. Output Power Demand: What's connected?

A phone charger vs. a refrigerator makes a huge difference. Since I only need it when I am not at home it would be great to run it on battery. For most home or light commercial uses, a 3000W-5000W inverter. This should work, but is terribly inefficient as you have losses in both the step-down converter and the inverter.

Can a 48V 220V inverter power a motor



How to convert a 220V AC universal motor to run on 48V DC?

You need to run it at 220V or crank up the DC voltage (but risk burning it up). At the end of the day, you're looking for 200W of power to push your motor. It's much easier at 220Vac then at 48Vdc, ...

Best 48V DC to 220VAC Inverters for Reliable Off-Grid and Solar Power

Choosing the right 48V DC to 220VAC inverter is essential for powering home appliances, solar off-grid systems, and recreational vehicles efficiently. These inverters convert battery-stored DC ...

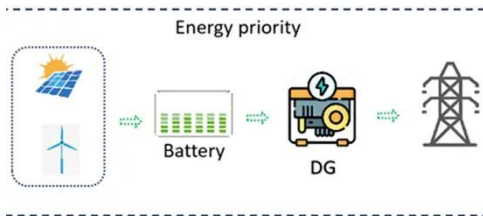


Can the Inverter 48v 220v 6000w be used to power multiple devices

In conclusion, the Inverter 48v 220v 6000w can definitely be used to power multiple devices simultaneously, as long as you consider the power ratings, surge power, and compatibility of the ...

How to Choose the Best 48v to 220v Inverter: A Complete Buying Guide

Learn what to look for in a 48v to 220v inverter, from power output and efficiency to safety features and top models. Make an informed choice today.

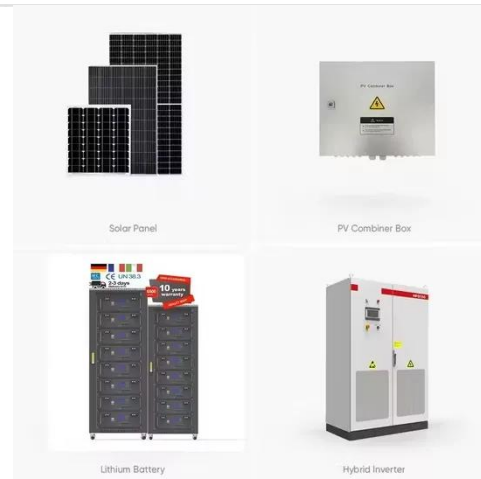


Can a 48V inverter power a 220V motor

Wondering if an inverter can step down 220V to 48V? The short answer is yes - but only with specialized step-down inverters designed for bidirectional voltage conversion.

48v Inverter, 48v DC to 120v/220v AC Power Inverter , inverter

One of the primary advantages of a 48V inverter is its improved efficiency. Higher voltage systems generally experience lower resistive losses, resulting in more efficient power conversion.



48 Volt Inverter with 220V 50Hz Motor: A Comprehensive Guide



If you've ever wondered how to bridge low-voltage energy systems with high-power appliances, a 48 volt inverter with 220V 50Hz motor is your answer. This combination is revolutionizing industries from ...

How Many Watts Does a 48V to 220V Inverter Use? A ...

This article breaks down how a 48V to 220V inverter works, its power consumption, and real-world applications - all while answering the burning question: "How many watts does it actually use?"



Using 220v inverter from 48V battery , Electronics Forums

This should work, but is terribly inefficient as you have losses in both the step-down converter and the inverter. It would be much better to generate the 220 V AC directly from the 48 V.

How to Choose the Best Inverter 48V 220V for Your Power Needs

In general, a 48v 220v inverter is ideal for permanent installations with sustained loads above 2000W. It's less suited for temporary or mobile applications with minimal power demands.



Contact Us

For catalog requests, pricing, or partnerships, please visit:
<https://www.59empagm.pl>

