

12 Fast photovoltaic panels connected in series



Overview

Here is how you connect your 12V solar panels in series: Gather your materials. Put your panels where they get. When you build your 12V solar panel system, you must pick how to wire the panels. You can use series, parallel, or sometimes both. Each way changes how your system works. Let's explore the key factors that will help you make the right choice. Check the Maximum PV Input Power Step 2. Calculate how many solar panels can be wired in series. Voltage Calculation is Critical for Safety: Series wiring adds voltages together, and temperature variations can push systems beyond safe limits. Always calculate maximum cold-weather voltage using temperature coefficients to ensure you stay within NEC's 600V limit for residential installations and. Step 3 - Connect the Solar Panel: Connect the solar panels to the controller following the chosen wiring diagram (series or parallel).

12 Fast photovoltaic panels connected in series



How to connect 12 solar panels in series , NenPower

Establishing an effective connection of 12 solar panels in series requires attention to numerous aspects, from choosing the correct setup to safety protocols throughout the process.

Solar Panel Wiring Guide: Series, Parallel & Hybrid 12-48 V

Appreciated for its simplicity, the 12V system allows for quick and accessible maintenance, even in a constrained environment. It efficiently powers navigation instruments, ...



How to connect solar panels together: Series, parallel, combo

Wondering how to connect solar panels together or even how to connect multiple solar panels together? In this guide, we'll explore three common wiring methods--series, parallel, and a ...

How to Connect Multiple Solar Panels Together (Series vs Parallel)

Use an MPPT controller if combining in series to take advantage of higher voltage. If panels are mounted in different directions or get uneven sun, parallel is safer.

LPSB48V400H
48V or 51.2V



How To Wire Solar Panels In Series: Complete Guide 2025

How Series Connections Work In a series configuration, solar panels are connected in a chain where the positive terminal of one panel connects to the negative terminal of the next. This creates a single ...

Guide to Connect Solar Panels in Series - PowMr

Learn how to connect solar panels in series and calculate the maximum number of solar panels in a series string for safe, efficient performance.



How to Wire Solar Panels in Series-Parallel Configuration?

For small residential loads, using a series-parallel combination of solar panels is

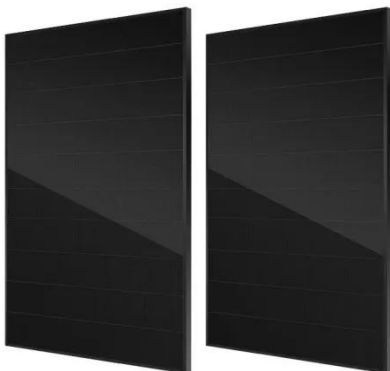


less common but still a possible wiring configuration. This setup connects the solar panels to batteries, ...

LPSB48V400H
48V or 51.2V

How to Safely Connect 12V Solar Panels in Series or Parallel

Safely connect multiple 12V solar panels in series or parallel. Learn wiring steps, safety tips, and how to match panels for reliable solar power.



How to Connect Solar Panels in Series and Parallel

Learn how to connect solar panels in series or parallel for 12V and 24V systems. Boost efficiency, protect your equipment, and power off-grid devices safely.

Mixing solar panels - Dos and Don'ts

Connecting more than one solar panel in series, in parallel or in a mixed-mode is

an effective and easy way not only to build a cost-effective solar panel system but also helps us add more solar panels in the future to ...



Contact Us

For catalog requests, pricing, or partnerships, please visit:
<https://www.59empagm.pl>

